

# MONTHLY MEMBERSHIP PROGRESS REPORT

District 2 S1

Results as of: 5/31/2026

GMT:

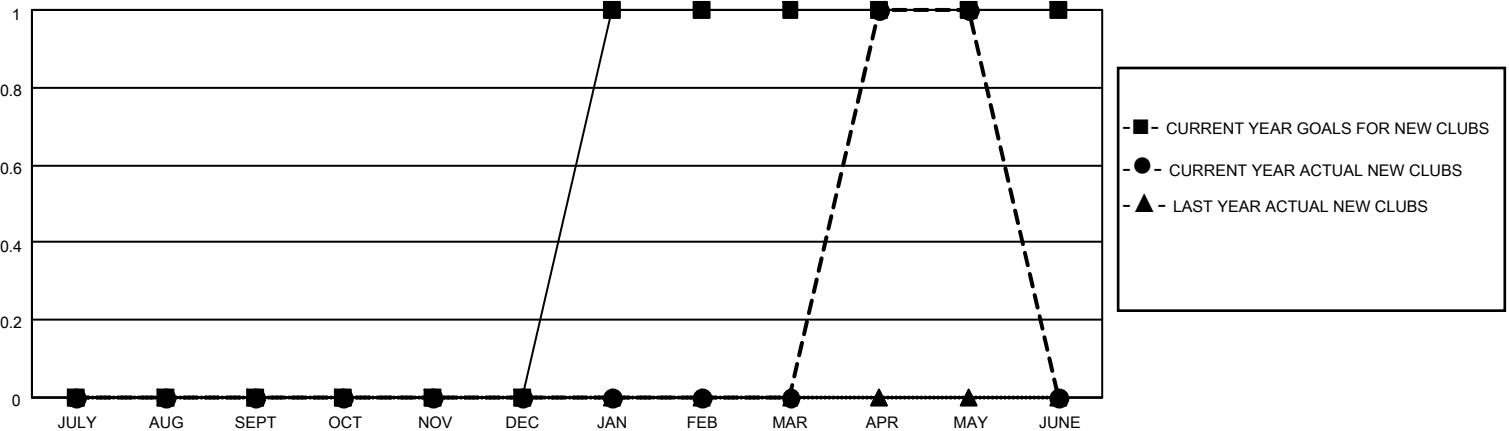
LOCATION TEXAS

GMT CA

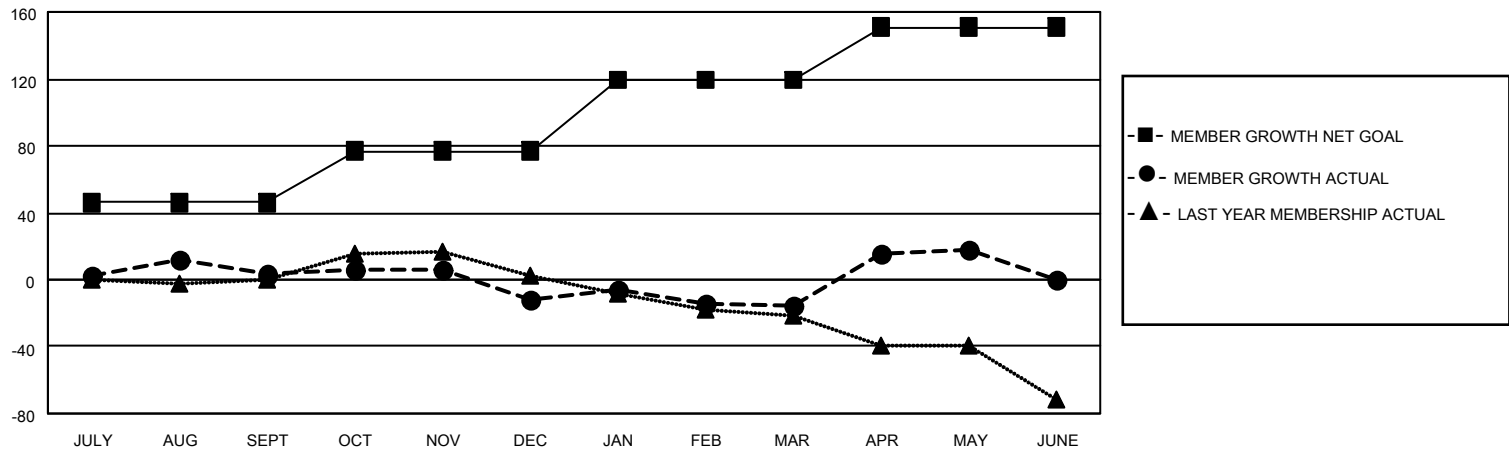
Clubs			
RESULTS FOR 2025-2026			
QUARTER	NEW CLUB GOAL	NEW CLUBS	DROPPED CLUBS
JULY/AUG/SEPT	0	0	0
OCT/NOV/DEC	0	0	0
JAN/FEB/MAR	1	0	0
APR/MAY/JUNE	0	1	0

Members			
RESULTS FOR 2025-2026			
QUARTER	MEMBER GROWTH NET GOAL	MEMBER GROWTH ACTUAL	DROPPED MEMBERS ACTUAL (including transfers)
JULY/AUG/SEPT	46	35	31
OCT/NOV/DEC	31	25	40
JAN/FEB/MAR	42	40	42
APR/MAY/JUNE	32	56	20

GOALS AND ACTUAL NEW CLUBS CUMULATIVE



GOALS AND ACTUAL MEMBERS CUMULATIVE



DROPPED CLUBS: 0	25 CLUBS OF 43 ADDED 1 OR MORE NEW MEMBERS	<u>GENDER DISTRIBUTION</u>	
<u>DROPPED MEMBERS</u>		MALE	979 (71.41%)
DECEASED	13	FEMALE	391 (28.52%)
CLUB CANCELLED	0	TOTAL FAMILY UNIT MEMBERS	
OTHER	119	195	
TOTAL	132	FAMILY MEMBERS PAYING HALF DUES	
		102	

[CLICK HERE FOR CUMULATIVE MEMBERSHIP DATA](#)